

# Welcome to St. Thomas



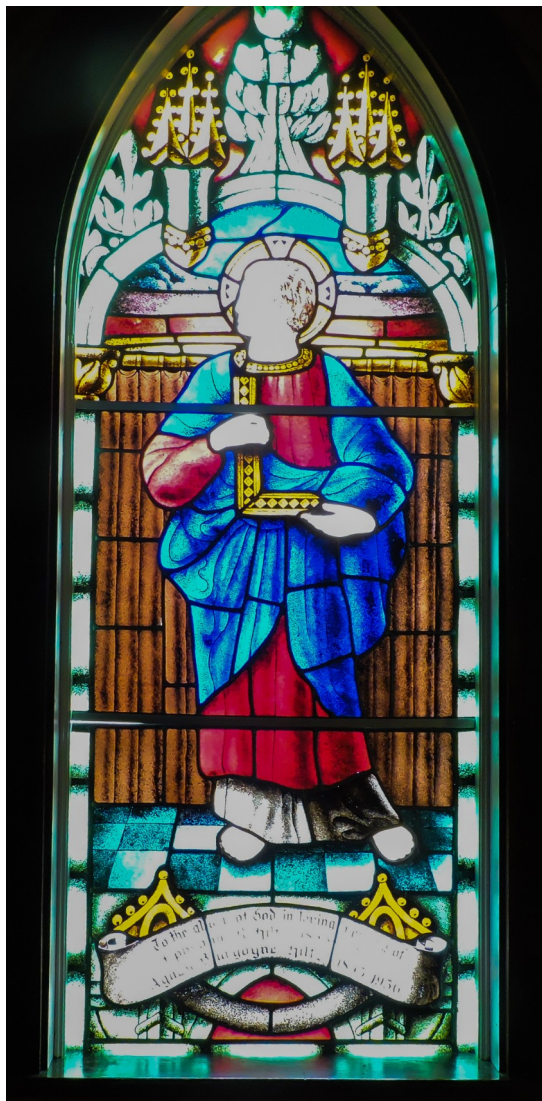
On June 4, 1760, a fleet of twenty-two vessels carrying the Cornwallis settlers sailed into Minas Basin. Major Starr's disembarked in Port Williams, with a royal mandate from King George III to establish the Church of England Parish, "Parish of Cornwallis". For ten years, the Anglicans in Cornwallis Township worshipped in private houses and buildings. In 1770, a small church was built at Fox Hill, Lower Church Street. This original church still exists. It has been relocated to just west of the current St. John's church and is used as a summer house.



St. John's Fox Hill, 1770 – 1810.



Entrance to the Fox Hill Cemetery, the original location of the church.



St. Thomas was a carpenter. This church was originally a carpenter's shop, in Kingsport, during the time when Ship Building was the primary industry. Many large ships were built here. The railway, the 300' wharf, fishing industries, shipping, apples, and so much more contributed to a vibrant, populous and thriving community. Three miles from Canning, a hub for folks on the North Mountain and Blomidon, during the horse and buggy days, and the days of the railroad.

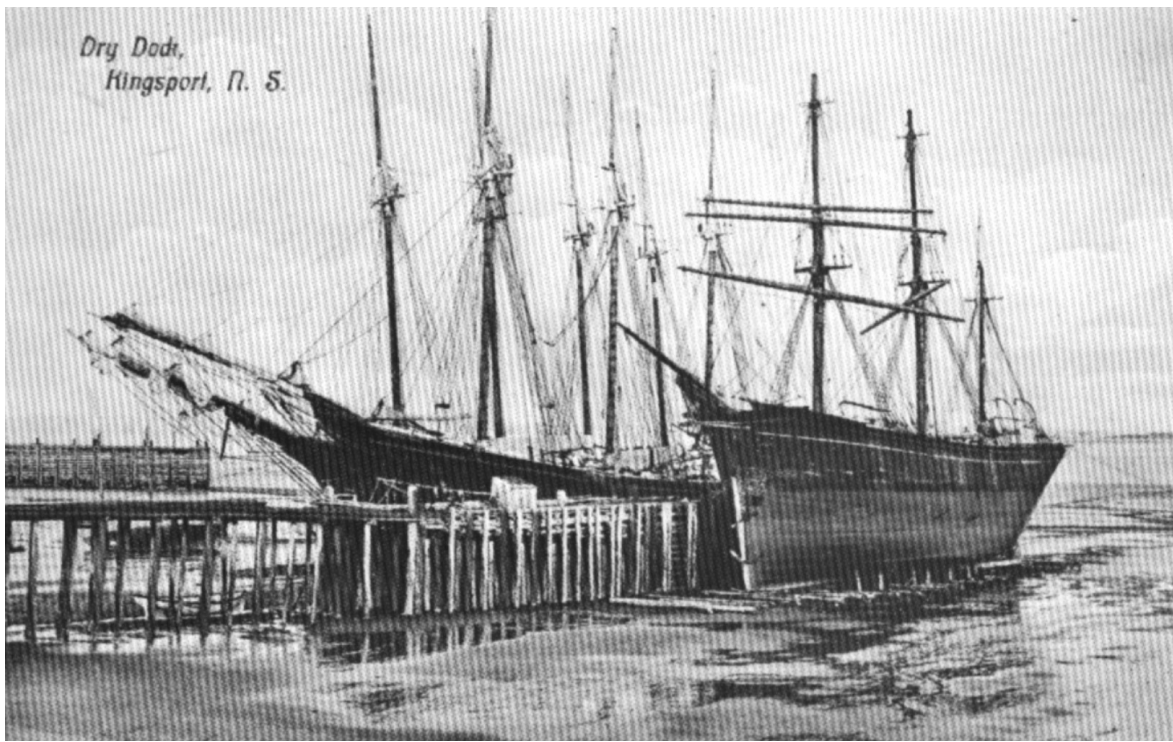


St. Thomas, holding his Carpenter's Square, 1982.



St. John's Port Williams, 1810 - present.





Kingsport Ship Building, undated.

Discussions to start a church in Kingsport started in 1893. By 1906, St. Thomas was established as a mission church in Kingsport. A carpenter's shop owned by Mr. Ephraim Hiltz was converted into a church by a local carpenter, Norman Cleveland, and given the designation "Kingsport Mission Hall". The building was moved to its current location sometime between 1894 and 1906, and consecrated in 1906.







The Baptismal Font was brought from England. The first baptism was in 1897.



The brass altar cross, 1923.



The altar missal stand, 1927.



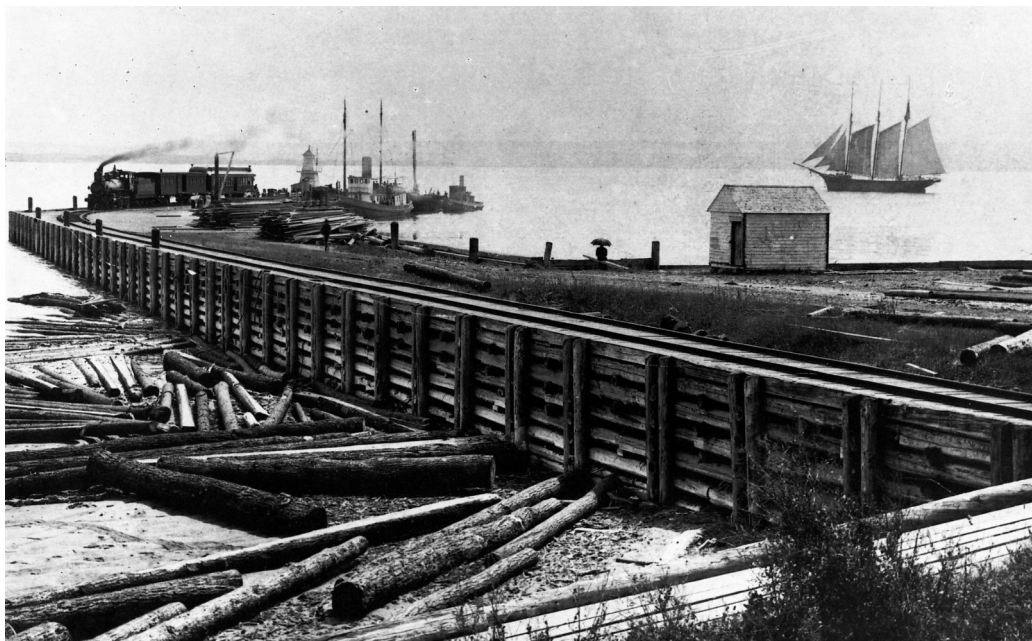
The window "Behold, I Stand by the Door and Knock" (Revelation 3:20), 1981.





St. Thomas is true to it's lineage as being the place of a Carpenter.

The entire ceiling and walls are covered in beautiful angle-cut and framed areas, with so much fine carving and joinery in the pews, Altar, and accoutrements



The Kingsport Wharf in the summer of 1911 with Locomotive No. 12; Combine No. 24 (behind engine) and Combine No. 31 meeting the DAR ferry SS Prince Albert. A pile driver and the tug Millie K. are at work on the 140-foot extension to the wharf constructed in 1911. A tern schooner is leaving the Habitant River mouth on the right, probably outbound from Canning. The photograph is from the Dorothy and Joe Taylor Collection featured in Gary W. Ness, Canadian Pacific's Dominion Atlantic Railway (Volume 1), p. 5.



"Blessed Virgin Mary with the Christ Child", 1999.

Join us every Sunday at St. Thomas (9:30am) and St. John's (11am).  
Visit us online at <http://parishofcornwallis.org>

*This historical handout was produced in September, 2022. Credit "On the Shoulders of Giants", published in 2010, ISBN 978-0-9864821-0-6.*